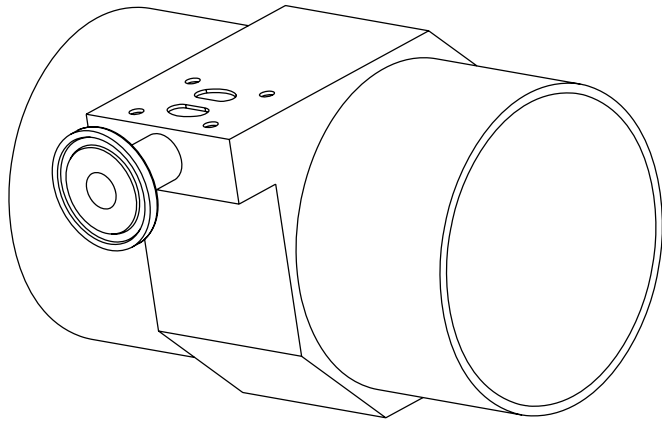
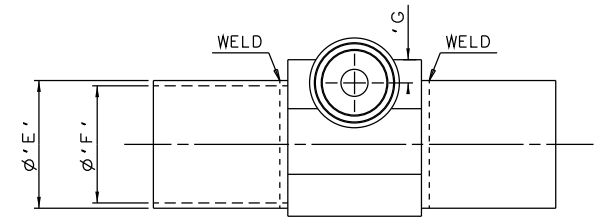
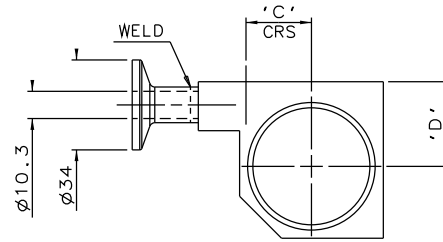
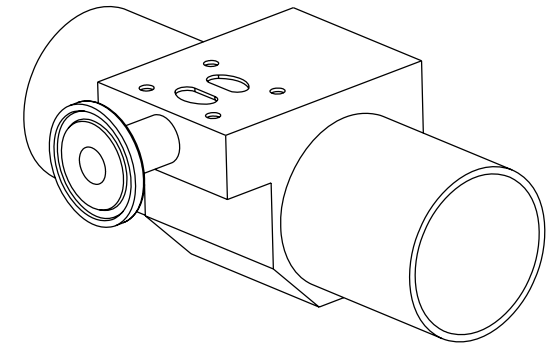
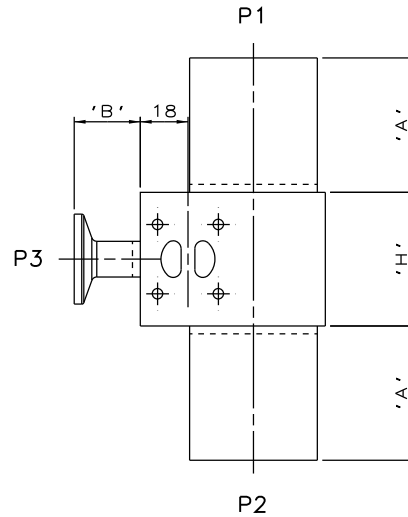


DN8 MAINLINE ONLY

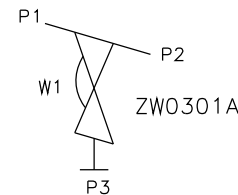


DN65 TO DN100
MAINLINE ONLY



DN10 TO DN50
MAINLINE ONLY

| MAINLINE SIZE | A | B | C | D | ØE | ØF | G | H | BODY WEIGHT |
|---------------|-------|------|------|------|-------|-------|-----|------|-------------|
| mm | mm | mm | mm | mm | mm | mm | mm | mm | Kgs |
| DN8 | 50.8 | 25.0 | 7.8 | 17.5 | 13.5 | 10.3 | 8.8 | 37.0 | 0.3 |
| DN10 | 50.8 | 25.0 | 9.6 | 20.0 | 17.2 | 14.0 | 8.8 | 37.0 | 0.3 |
| DN15 | 50.8 | 25.0 | 11.7 | 22.0 | 21.3 | 18.1 | 8.8 | 37.0 | 0.4 |
| DN20 | 50.8 | 25.0 | 14.5 | 24.6 | 26.9 | 23.7 | 8.8 | 37.0 | 0.4 |
| DN25 | 50.8 | 25.0 | 17.2 | 27.0 | 33.7 | 29.7 | 8.8 | 50.5 | 0.7 |
| DN32 | 50.8 | 25.0 | 21.8 | 30.0 | 42.4 | 38.4 | 8.8 | 50.5 | 0.9 |
| DN40 | 50.8 | 25.0 | 24.8 | 32.0 | 48.3 | 44.3 | 8.8 | 50.5 | 0.9 |
| DN50 | 50.8 | 25.0 | 30.2 | 35.0 | 60.3 | 55.1 | 8.8 | 50.5 | 1.3 |
| DN65 | 50.8 | 25.0 | 38.1 | 40.0 | 76.1 | 70.9 | 8.8 | 50.5 | 1.4 |
| DN80 | 50.8 | 25.0 | 44.5 | 48.0 | 88.9 | 83.7 | 8.8 | 50.5 | 1.7 |
| DN100 | 101.6 | 25.0 | 57.2 | 60.0 | 114.3 | 109.1 | 8.8 | 50.5 | 2.8 |



ORIENTATION AS PER
P&ID DIAGRAM FOR
OPTIMUM DRAINABILITY.

The information on this sheet is Private and Confidential and is the property of Crane Process Flow Technologies Limited and must not be published directly or indirectly in any manner whatsoever without the written permission of the Company and must not be used in any way detrimental to their interests.
© Crane Process Flow Technologies

CRANE Process Flow Technologies
A Crane Co. Company

Saunders
The Science Inside

Title
SCHEDULE OF LEADING DIMENSIONS FOR DN8
WEIR 'T' BODY COMPLETE WITH :
MAINLINE : ISO 1127 S1 BUTT WELD ENDS
BRANCH : DN8 HYGIENIC CLAMP END WITH ISO 1127 S1 BORE

Drawn JRD Date 13.10.11

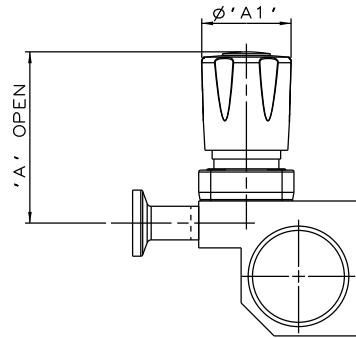
UNCONTROLLED IN
HARD COPY FORMAT

Checked RND Date 22.03.12

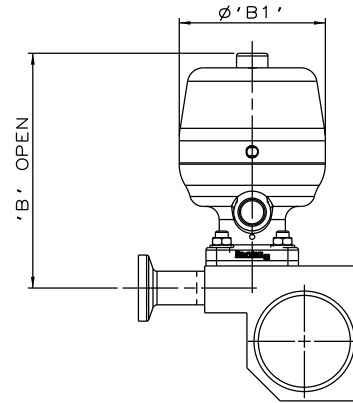
First Angle Projection Method E

Drawing No. WEB-082 Issue. 2

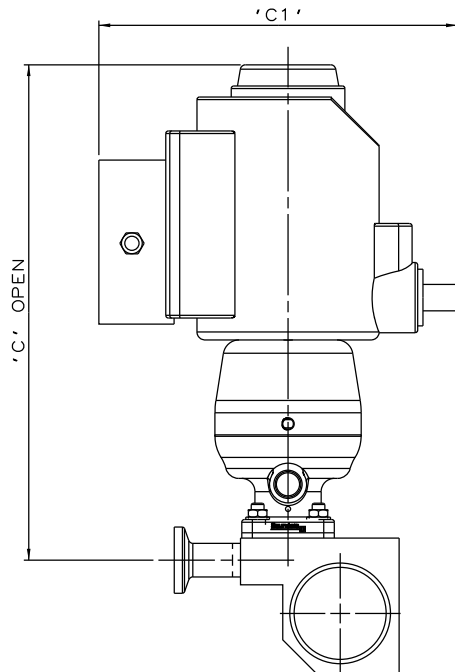
DO NOT SCALE



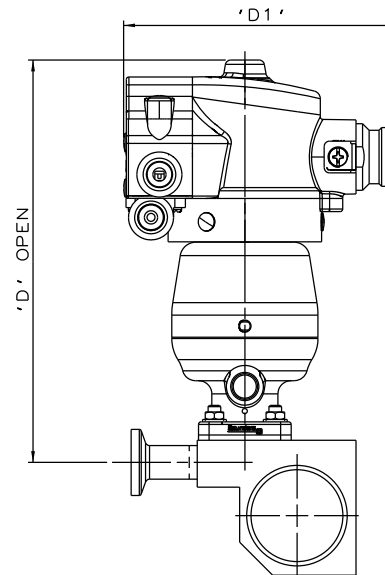
PURE PERFORMANCE
BONNET ASSEMBLY



*S360 ACTUATOR



*S360 ACTUATOR
WITH I-VUE SENSOR



*S360 ACTUATOR
WITH M-VUE SENSOR

The information on this sheet is Private and Confidential and is the property of Crane Process Flow Technologies Limited and must not be published directly or indirectly in any manner whatsoever without the written permission of the Company and must not be used in any way detrimental to their interests.
© Crane Process Flow Technologies

CRANE Process Flow Technologies
A Crane Co. Company

Saunders
The Science Inside

Title
SCHEDULE OF LEADING DIMENSIONS FOR DN8/0.25 WEIR
'T' BODY (DN8/0.25 BRANCH) WITH MAINLINE BUTT WELD ISO 1127 S1
ENDS, BRANCH HYGIENIC CLAMP END WITH ISO 1127 S1 BORE.
FITTED WITH TOPWORKS OPTIONS

| | | | |
|---------------------------------------|--------------------|-------------------------------------|-------------|
| Drawn R1 | Date 09.05.17 | UNCONTROLLED IN HARD COPY FORMAT | |
| Checked RND | Date 09.05.17 | | |
| First Angle Projection Method E | DO NOT SCALE | Drawing No. WEB-082-ASSY | Issue. 1 |

* DIMENSIONS SHOW MAXIMUM ENVELOPE FOR ALL MODES

| BRANCH SIZE | | A | | A1 | | B | | B1 | | C | | C1 | | D | | D1 | |
|-------------|------|------|------|------|------|------|------|------|------|-------|------|-------|------|-------|------|-------|------|
| mm | inch | mm | inch | mm | inch | mm | inch | mm | inch | mm | inch | mm | inch | mm | inch | mm | inch |
| DN8 | 0.25 | 65.2 | 2.57 | 34.0 | 1.34 | 88.8 | 3.50 | 55.0 | 2.18 | 187.8 | 7.39 | 136.0 | 5.35 | 153.8 | 6.06 | 103.8 | 4.09 |